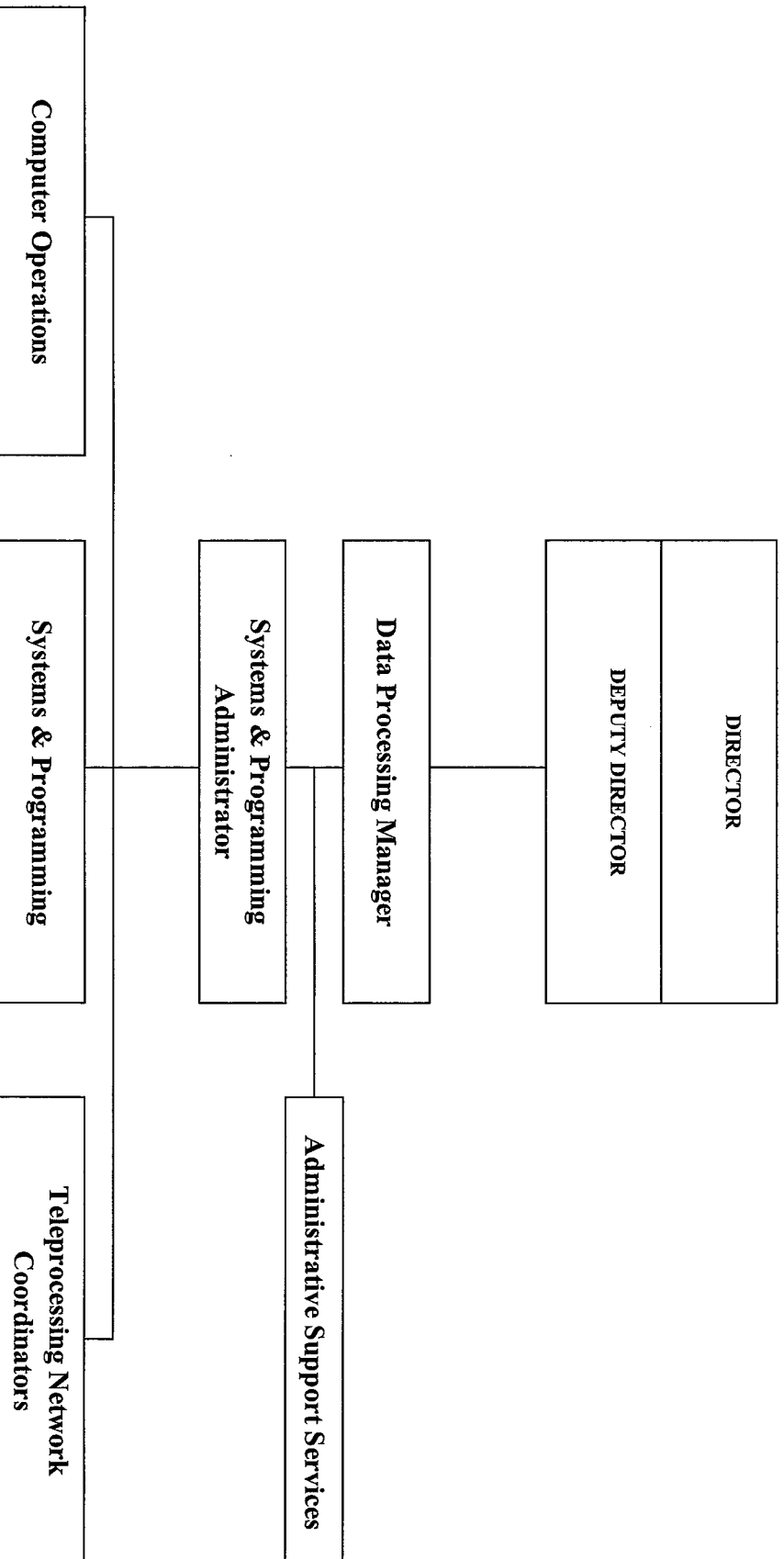


**DATA PROCESSING  
DIVISION**

ORIGINAL

**DATA PROCESSING DIVISION  
ORGANIZATIONAL CHART**

**FISCAL YEAR 2012 and 2013**



ORIGINAL

# DATA PROCESSING DIVISION FUNCTIONAL CHART FISCAL YEAR 2012 and 2013

DIRECTOR

DEPUTY DIRECTOR

DATA PROCESSING MANAGER

Plan, organize, and administer all Data Processing activities of government of Guam. Directs the fulfillment of Data Processing services, development, and production.

SYSTEMS & PROGRAMMING ADMINISTRATOR

Supervises the technical sections of the division. Participates in technical projects. Prepares reports to inform management of progress with projects and tasks. Consults with management to obtain directives, requirements, and goals. Monitors equipment performance and maintenance to manage and plan changes.

ADMINISTRATIVE SUPPORT SERVICES

Performs administrative functions including budget preparation, fund management, recordkeeping, filing, and procurement; develop, amend, and interpret administrative policies and procedures and guidelines of management services; confer with employees regarding policies, regulations, and guidelines; prepare correspondences and reports; receive calls and visitors; routes calls and inquiries to the proper destinations; uses judgment in handling problems, complaints, and other related duties.

COMPUTER OPERATIONS

Directs the scheduling and operations of production activities and equipment. Establishes and enforces standards and procedures for production work, work-flow, and security of materials and equipment. Perform maintenance and backup procedures. Oversee the Help Desk operations and reporting. Assist with support of the Public Safety communications system for GPD and Homeland Security.

SYSTEMS & PROGRAMMING

Leads projects and assigns work to other technical staff. Provides IT consulting services to agencies for changes to systems, technology, procedures, etc. Analyzes user requests for new IT solutions to determine feasibility, cost, time line, and compatibility with the existing environment. Oversees IT support services to agencies as assigned. Install, maintain, and support system and network servers and operating system software. Install, maintain, and support application software.

TELEPROCESSING NETWORK COORDINATORS

Install network equipment and devices at the various agencies. Provide support services to the Government of Guam Wide Area Network (GGWAN) and Local Area Networks (LAN) at the various agencies. Provide general PC hardware and software technical support.

ORIGINAL

**Decision Package  
Biennial Budget  
Fiscal Years 2012 & 2013**

**Department:** Department of Administration      **Division/Section:** Data Processing

**Program Title:** Data Processing

**Activity Description:**

The Data Processing Division operates under the provision of 5GCA, Division 2, Chapter 20, Article 2, (P.L. 13-96) - to establish and administer data processing functions.

**Major Objective(s):**

To administer cost-efficient, effective, and reliable Information Technology (IT) support for the Executive Branch of the government of Guam, with a focus on quality in order to satisfy the support needs of our customers and our community at large.

**Short-term Goals:**

To administer cost-efficient, effective, and reliable IT support for the Executive Branch of the government of Guam, with a focus on quality in order to satisfy the support needs of our customers and community at large in areas of project management, applications support, networking, technical support services, and IT standards and procurement.

**Workload Output**

Workload Indicator:	FY 2010 Level of Accomplishment	FY 2011 Anticipated Level	FY 2012 Projected Level	FY 2013 Projected Level
Computer operations services	1,276/	1,295	1,310	1,310
Project Management/System Development Services	71 Projects/	80 Projects	90 Projects	90 Projects
Networking and Technical Support Services	2,600/	2,700	2,800	2,800

ORIGINAL

AS400 Account Code	Appropriation Classification	GENERAL FUND					SPECIAL FUND					FEDERAL MATCH					GRAND TOTALS (ALL FUNDS)					
		FY 2010 Expenditures & Encumbrances	FY 2011 Authorized Level	FY 2012 Governor's Request	FY 2013 Governor's Request	FY 2010 Expenditures & Encumbrances	FY 2011 Authorized Level	FY 2012 Governor's Request	FY 2013 Governor's Request	FY 2010 Expenditures & Encumbrances	FY 2011 Authorized Level	FY 2012 Governor's Request	FY 2013 Governor's Request	FY 2010 Expenditures & Encumbrances	FY 2011 Authorized Level	FY 2012 Governor's Request	FY 2013 Governor's Request					
111	PERSONNEL SERVICES	428,646	603,524	879,997	895,998	0	0	0	0	0	0	0	0	0	0	0	0	428,646	603,524	879,997	895,998	
112	Regular Salaries/Incentives/Special Pay	0	0	0	0	0	0	0	0	0	0	0	0	0	0	0	0	0	0	0	0	
113	Overtime	116,420	189,511	266,741	287,517	0	0	0	0	0	0	0	0	0	0	0	0	116,420	189,511	266,741	287,517	
114	Benefits	22,181	17,277	53,506	53,506	0	0	0	0	0	0	0	0	0	0	0	0	22,181	17,277	53,506	53,506	
	Insurance Benefits (Medical / Dental / Life)																					
	TOTAL PERSONNEL SERVICES	\$567,247	\$810,312	\$1,200,244	\$1,237,021	\$0	\$0	\$0	\$0	\$0	\$0	\$0	\$0	\$0	\$0	\$0	\$0	\$567,247	\$810,312	\$1,200,244	\$1,237,021	
220	OPERATIONS	0	0	0	0	0	0	0	0	0	0	0	0	0	0	0	0	0	0	0	0	
	TRAVEL - Off-Island/Local Mileage Reimburs.																					
230	CONTRACTUAL SERVICES	0	0	0	0	0	0	0	0	0	0	0	0	0	0	0	0	0	0	0	0	
	OFFICE SPACE RENTAL																					
233	OFFICE SPACE RENTAL	0	0	0	0	0	0	0	0	0	0	0	0	0	0	0	0	0	0	0	0	
240	SUPPLIES & MATERIALS	0	0	0	0	0	0	0	0	0	0	0	0	0	0	0	0	0	0	0	0	
240	SUPPLIES & MATERIALS	0	0	0	0	0	0	0	0	0	0	0	0	0	0	0	0	0	0	0	0	
250	EQUIPMENT	0	0	0	0	0	0	0	0	0	0	0	0	0	0	0	0	0	0	0	0	
270	WORKERS COMPENSATION	0	0	0	0	0	0	0	0	0	0	0	0	0	0	0	0	0	0	0	0	
271	DRUG TESTING	0	0	0	0	0	0	0	0	0	0	0	0	0	0	0	0	0	0	0	0	
280	SUB-RECIPIENT/SUBGRANT	0	0	0	0	0	0	0	0	0	0	0	0	0	0	0	0	0	0	0	0	
290	MISCELLANEOUS	0	0	0	0	0	0	0	0	0	0	0	0	0	0	0	0	0	0	0	0	
	TOTAL OPERATIONS	\$0	\$0	\$0	\$0	\$0	\$0	\$0	\$0	\$0	\$0	\$0	\$0	\$0	\$0	\$0	\$0	\$0	\$0	\$0	\$0	
361	UTILITIES	0	0	0	0	0	0	0	0	0	0	0	0	0	0	0	0	0	0	0	0	
362	Power	0	0	0	0	0	0	0	0	0	0	0	0	0	0	0	0	0	0	0	0	
362	Water/ Sewer	0	0	0	0	0	0	0	0	0	0	0	0	0	0	0	0	0	0	0	0	
363	Telephone Toll	0	0	0	0	0	0	0	0	0	0	0	0	0	0	0	0	0	0	0	0	
	TOTAL UTILITIES	\$0	\$0	\$0	\$0	\$0	\$0	\$0	\$0	\$0	\$0	\$0	\$0	\$0	\$0	\$0	\$0	\$0	\$0	\$0	\$0	
450	CAPITAL OUTLAY	0	0	0	0	0	0	0	0	0	0	0	0	0	0	0	0	0	0	0	0	
	TOTAL APPROPRIATIONS	\$567,247	\$810,312	\$1,200,244	\$1,237,021	\$0	\$0	\$0	\$0	\$0	\$0	\$0	\$0	\$0	\$0	\$0	\$0	\$567,247	\$810,312	\$1,200,244	\$1,237,021	
	UNCLASSIFIED	0	2	2	2	0	0	0	0	0	0	0	0	0	0	0	0	0	2	2	2	2
	CLASSIFIED	9	18	18	18	0	0	0	0	0	0	0	0	0	0	0	0	9	18	18	18	
	TOTAL FIES	9.00	20.00	20.00	20.00	0.00	0.00	0.00	0.00	0.00	0.00	0.00	0.00	0.00	0.00	0.00	0.00	9.00	20.00	20.00	20.00	

ORIGINAL

Schedule B- Contractual

Item	FY 2012			FY 2013		
	Quantity	Unit Price	Total Price	Quantity	Unit Price	Total Price
See Director's Office			\$ -			\$ -
			\$ -			\$ -
			\$ -			\$ -
			\$ -			\$ -
			\$ -			\$ -
<b>Total Contractual</b>			\$ -			\$ -

Schedule C - Supplies & Materials

Item	FY 2012			FY 2013		
	Quantity	Unit Price	Total Price	Quantity	Unit Price	Total Price
			\$ -			\$ -
			\$ -			\$ -
			\$ -			\$ -
			\$ -			\$ -
			\$ -			\$ -
<b>Total Supplies &amp; Materials</b>			\$ -			\$ -

Schedule D - Equipment

Item	FY 2012			FY 2013		
	Quantity	Unit Price	Total Price	Quantity	Unit Price	Total Price
			\$ -			\$ -
			\$ -			\$ -
			\$ -			\$ -
			\$ -			\$ -
			\$ -			\$ -
<b>Total Equipment</b>			\$ -			\$ -

Schedule E - Miscellaneous

Item	FY 2012			FY 2013		
	Quantity	Unit Price	Total Price	Quantity	Unit Price	Total Price
			\$ -			\$ -
			\$ -			\$ -
			\$ -			\$ -
			\$ -			\$ -
			\$ -			\$ -
<b>Total Miscellaneous</b>			\$ -			\$ -

Schedule F - Capital Outlay

Item	FY 2012			FY 2013		
	Quantity	Unit Price	Total Price	Quantity	Unit Price	Total Price
			\$ -			\$ -
			\$ -			\$ -
			\$ -			\$ -
			\$ -			\$ -
			\$ -			\$ -
<b>Total Capital Outlay</b>			\$ -			\$ -

ORIGINAL

Government of Guam  
Fiscal Year 2012  
Agency Staffing Pattern  
(PROPOSED)

[BBMR SP-1]

FUNCTIONAL AREA: FISCAL AND ADMINISTRATIVE  
DEPARTMENT/AGENCY: DEPARTMENT OF ADMINISTRATION  
PROGRAM: DATA PROCESSING DIVISION  
FUND: GENERAL FUND

As of: 4 April 2011

(A)		(B)		(C)		(D)		(E)		(F)		(G)		(H)		(I)		(J)		(K)		(L)		(M)		(N)		(O)		(P)		(Q)		(R)		(S)	
No.	Position Title	Name of Employee	Grade/Step	Salary	Overtime	Specifer	Date	Increment	Subtotal	Retirement	Retire (DD)	Social Security	Medicare	Life	Medical	Dental	Total Benefits	TOTAL																			
1	Data Processing Manager	Joseph C. Manuusan	O-01	\$33,811	\$0	\$0	1/3/2012	\$1,585	\$35,396	\$10,017	\$0	\$0	\$513	\$174	\$0	\$0	\$10,704	\$46,100																			
2	Administrative Officer	Frances F. Cruz	L-08	\$7,128	0	0	2/14/2013	0	37,128	10,507	495	0	538	174	0	0	14,420	51,548																			
3	Computer Systems Analyst II	Gerardine S. Delgado	M-17	\$4,731	0	0	12/11/2011	1,596	56,327	15,941	0	0	0	174	0	0	16,115	72,442																			
4	Computer Systems Analyst II	Mary Ann D. Mendola	M-15	\$1,092	0	0	7/20/2012	447	51,539	14,586	0	0	747	174	0	0	15,507	67,046																			
5	Computer Systems Analyst II	Shirley Ann L. G. Manuoz	M-13	\$7,695	0	0	7/26/2013	0	47,295	13,298	0	0	692	174	0	0	14,363	62,658																			
6	Computer Systems Analyst II	Michael S. Cruz	M-18	\$6,646	0	0	3/29/2013	0	56,646	16,031	0	0	821	174	0	0	19,090	75,736																			
7	Computer Ops Supervisor	Francis F. Cruz	J-17	\$3,784	0	0	8/22/2012	256	44,040	12,433	0	0	673	174	0	0	19,699	63,739																			
8	Computer Network Coord	Ethan J. Cruz	L-15	\$7,246	0	0	4/12/2013	0	47,246	13,371	495	0	685	174	0	0	18,969	66,215																			
9	Computer Systems Analyst I	Romana M. Palomo	J-14	\$8,155	0	0	10/18/2012	1,316	39,491	12,318	0	0	662	174	0	0	21,181	66,829																			
10	Telephone Network Coord	Victor S. N. Somo	J-13	\$8,155	0	0	10/18/2012	1,316	39,491	11,176	0	0	573	174	0	0	14,618	54,109																			
11	Geographic Info System Mgr	Jesse L. Rojas	O-10	\$0,717	0	0	11/11/2012	0	50,717	14,353	0	0	735	174	0	0	15,262	65,979																			
12	Computer Programmer	Kenneth J. Cruz	L-02	\$2,726	0	0	7/1/2012	334	23,060	6,526	495	0	334	174	0	0	10,224	33,284																			
13	Computer Analyst II	Joseph A. Baza	M-10	\$3,018	0	0	8/1/2013	0	43,018	12,174	495	0	624	174	0	0	15,723	58,741																			
14	Computer System Analyst I	Joseph A. Nedeleg	L-11	\$1,172	0	0	9/17/2013	0	41,172	11,652	0	0	597	174	0	0	12,433	53,595																			
15	Systems & Programming Adm	Benigno B. Camacho	UNCL	\$5,275	0	0	n/a	0	55,275	15,643	0	0	3,427	174	0	0	20,045	75,320																			
16	Computer Programmer/Anal Sup	Christine M. San Aquista	UNCL	\$0,717	0	0	n/a	0	50,717	14,353	0	0	735	174	0	0	17,518	68,235																			
17	Computer Systems Analyst I	Gerard B. Cabre	L-12	\$2,613	0	0	3/1/2012	870	43,483	12,306	0	0	631	174	0	0	17,354	60,837																			
18	Computer Systems Analyst I	Deann C. Rivera	L-09	\$8,484	0	0	3/30/2012	774	39,228	11,102	0	0	569	174	0	0	19,271	58,499																			
19	Telephone Network Coord	Eric H. Kneel	J-11	\$5,618	0	0	10/10/2012	0	35,618	10,080	495	0	516	174	0	0	13,521	49,139																			
20	Computer Operator III	John S. Bamba	J-11	\$5,618	0	0	1/22/2012	935	36,553	10,344	495	0	530	174	0	0	14,239	50,792																			
				Total:	\$871,864	\$0	\$0	\$8,133	\$879,997	\$249,039	\$2,970	\$3,427	\$11,305	\$3,480	\$47,084	\$2,942	\$320,247	\$1,200,244																			

\* Night Differential / Hazardous / Worker's Compensation / etc.  
1/1: FY 2011 (current) Gov/Guam contribution for Life Insurance is \$174 per annum. Subject to change in FY 2012  
2/1: FY 2012 (proposed) Gov/Guam contribution rate of 28.3% for the Government of Guam Retirement is subject to change

ORIGINAL

Input by Department																		
(A)	(B)	(C)	(D)	Special Pay Categories						(K)								
No.	Position	Name of Incumbent	Hourly Pay	Night Differential Pay 1/	Diurnal Pay 2/	Hazard Pay 3/	Shift-Sunday Pay 4/	Night Pay 5/	EMT Pay 6/	(B*F+G+H+I+J)								
				10%	10%	8%	15%	15%			Sutotal							
1	64001	Data Processing Manager	\$0	\$0	\$0	\$0	\$0	\$0	\$0	\$0	\$0							
2	64002	Administrative Officer	Frances F. Cruz	0	0	0	0	0	0	0	0							
3	64011	Computer Systems Analyst II	Georgina S. Delgado	0	0	0	0	0	0	0	0							
4	64014	Computer Systems Analyst II	Mary Ann D. Macabala	0	0	0	0	0	0	0	0							
5	64035	Computer Systems Analyst II	Shirley Ann L. G. Maltez	0	0	0	0	0	0	0	0							
6	64018	Computer Systems Analyst II	Michael S. Cruz	0	0	0	0	0	0	0	0							
7	2685	Teleproc Network Coord	Fernando R. Perez	0	0	0	0	0	0	0	0							
8	64022	Computer Ops Supervisor	Eliane J. Cruz	0	0	0	0	0	0	0	0							
9	64016	Computer Systems Analyst I	Roman M. Palomo	0	0	0	0	0	0	0	0							
10	64040	Teleproc Network Coord	Victor S. N. Sarto	0	0	0	0	0	0	0	0							
11		Geographic Info Syst/Land Mfr	Jesse J. Rojas	0	0	0	0	0	0	0	0							
12		Computer Programmer	Kenneth J. Cruz	0	0	0	0	0	0	0	0							
13		Computer Analyst II	Joseph A. Beza	0	0	0	0	0	0	0	0							
14		Computer System Analyst I	Joseph J. Noddege	0	0	0	0	0	0	0	0							
15		Systems & Programmer Adm	Rosalino B. Canachon	0	0	0	0	0	0	0	0							
16		Computer Programmer/Anal Sup	Christine M. San Agustina	0	0	0	0	0	0	0	0							
17		Computer Systems Analyst I	Gerritt B. Carve	0	0	0	0	0	0	0	0							
18		Computer Systems Analyst I	Dean C. Rivera	0	0	0	0	0	0	0	0							
19		Teleproc Network Coord	Eric H. Rosell	0	0	0	0	0	0	0	0							
20		Computer Operator III	John S. Bantha	0	0	0	0	0	0	0	0							
Total:											\$0	\$0	\$0	\$0	\$0	\$0	\$0	\$0

- 1/ 10% of reg. rate, applicable from 6pm- 6am, employee must work 4 hours consecutive after 6pm for entitlement of the pay
- 2/ Applies to law enforcement personnel
- 3/ Applies to solid waste employees
- 4/ 1 1/2 of reg. rate of pay from 12am Friday to 12 midnight Sunday
- 5/ 1 1/2 of reg. rate of pay on daily work exceeding 8 hours
- 6/ Applicable only to GFDD ambulatory service personnel, 15% of reg. rate of pay

ORIGINAL



FUNCTIONAL AREA: FISCAL AND ADMINISTRATIVE  
DEPARTMENT/AGENCY: DEPARTMENT OF ADMINISTRATION  
PROGRAM: DATA PROCESSING DIVISION  
FUND: GENERAL FUND  
As of: 4 April 2011

No.	Position Number	Position Title	Grade/Step	Salary	Overtime	Special	Increment		Subtotal	Retirement (1 * 30.09%/2)	Retire (DD) (\$19.02*24PT)	Social Security (6.2% * J)	Medicare (1.45% * J)	Life (1)	Medical (Presby)	Dental (Presby)	Total Benefits (K than Q)	(J + R) TOTAL
							Date	Amount										
1	64001	Data Processing Manager	O-02	\$35,924	\$0	\$0	1/3/2013	\$1,586	\$37,510	\$11,287	\$0	\$0	\$544	\$174	\$0	\$0	\$12,005	\$49,515
2	64002	Administrative Officer	L-08	37,128	0	0	2/14/2013	884	38,012	11,438	495	0	551	174	2,496	209	15,343	53,375
3	64011	Computer Systems Analyst II	M-18	56,646	0	0	12/17/2013	0	56,646	17,045	0	0	767	174	0	0	17,219	73,865
4	64014	Computer Systems Analyst II	M-16	52,880	0	0	7/20/2014	0	52,880	15,912	0	0	0	174	0	0	16,882	69,232
5	64035	Computer Systems Analyst II	M-13	47,695	0	0	7/26/2013	417	48,112	14,477	0	0	0	174	0	0	15,349	63,461
6	64038	Computer Systems Analyst II	M-18	56,646	0	0	3/29/2013	1,157	57,803	17,393	0	0	838	174	2,064	0	20,449	78,272
7	2685	Telephone Network Coord	J-18	46,317	0	0	8/2/2013	0	46,317	13,636	0	0	0	174	6,713	349	20,872	66,189
8	64022	Computer Ops Supervisor	L-15	47,246	0	0	4/1/2013	827	48,073	14,465	495	0	697	174	4,035	209	20,075	68,148
9	64016	Computer Systems Analyst I	L-14	46,648	0	0	10/18/2012	1,598	47,246	14,216	0	0	573	174	7,020	407	22,502	69,748
10	64040	Telephone Network Coord	J-14	39,491	0	0	10/10/2013	0	39,491	11,883	0	0	0	174	2,503	192	15,324	54,815
11		Geographic Info System Analyst	O-10	50,717	0	0	11/11/2012	1,627	52,344	15,750	0	0	759	174	0	0	16,683	69,027
12		Computer Programmer	L-03	24,062	0	0	7/1/2013	334	24,396	7,441	495	0	354	174	2,503	192	11,068	35,854
13		Computer Analyst II	M-10	43,018	0	0	8/1/2013	251	43,269	13,020	495	0	627	174	2,064	192	16,572	59,841
14		Computer System Analyst I	L-11	41,172	0	0	9/17/2013	120	41,292	12,425	0	0	599	174	0	0	13,197	54,489
15		Computer Programmer/Anal Sup	UNCL	50,717	0	0	na	0	50,717	15,261	0	0	735	174	2,064	192	18,426	69,143
16		Computer System Analyst I	UNCL	55,275	0	0	na	0	55,275	16,632	0	0	801	174	0	0	21,095	76,310
17		Computer Systems Analyst I	L-13	44,105	0	0	3/1/2014	0	44,105	13,271	0	0	640	174	4,035	209	18,329	62,434
18		Computer Systems Analyst I	L-10	39,780	0	0	3/30/2014	0	39,780	11,970	0	0	577	174	7,020	407	20,148	59,928
19		Telephone Network Coord	J-11	35,618	0	0	10/10/2012	1,347	36,865	11,093	495	0	535	174	2,064	192	14,552	51,417
20		Computer Operator III	J-12	36,865	0	0	1/22/2014	0	36,865	11,093	495	0	535	174	2,503	192	14,991	51,856
				Total:	\$885,950	\$0	\$0		\$16,048	\$895,998	\$219,606	\$2,970	\$3,427	\$3,480	\$47,084	\$2,942	\$341,022	\$1,237,020

\* Night Differential/ Hazardous / Worker's Compensation / etc.  
1/ FY 2011 (current) GovGuam contribution for Life Insurance is \$174 per annum. Subject to change in FY 2013.  
2/ FY2013 (proposed) GovGuam contribution rate of 30.09% for the Government of Guam Retirement is subject to change.

ORIGINAL

Government of Guam  
 Fiscal Year 2013  
 Agency Staffing Pattern  
 (PROPOSED)

Input by Department												
(A)	(B)	(C)	(D)	Special Pay Categories						(K)		
No.	Position Number	Position Title	Name of Incumbent	Holiday Pay	Night Differential Pay 10%	Hazard Pay 10%	Hazard Pay 8%	Shift/Sunday Pay 1.5	Nurse Pay 1.5	EMT Pay 15%	(E+P+O+H+I+J)	
1	64001	Data Processing Manager	Joseph C. Mathison	\$0	\$0	\$0	\$0	\$0	\$0	\$0	\$0	
2	64002	Administrative Officer	Frances F. Cruz	0	0	0	0	0	0	0	0	
3	64011	Computer Systems Analyst II	Gerardine S. Delgado	0	0	0	0	0	0	0	0	
4	64014	Computer Systems Analyst II	Mary Ann D. Mendola	0	0	0	0	0	0	0	0	
5	64035	Computer Systems Analyst II	Shirley Ann L. G. Almonz	0	0	0	0	0	0	0	0	
6	64018	Computer Systems Analyst II	Michael S. Cruz	0	0	0	0	0	0	0	0	
7	2685	Telephone Network Coord	Francis R. Cruz	0	0	0	0	0	0	0	0	
8	64022	Telephone Network Coord	Ethene J. Cruz	0	0	0	0	0	0	0	0	
9	64016	Computer Ops Supervisor	Roman M. Palomo	0	0	0	0	0	0	0	0	
10	64040	Computer Systems Analyst I	Victor S. N. Sotelo	0	0	0	0	0	0	0	0	
11		Geographic Info. Syst./Land Mgt	Jesse J. Rojas	0	0	0	0	0	0	0	0	
12		Computer Programmer	Kenneth J. Cruz	0	0	0	0	0	0	0	0	
13		Computer Analyst II	Joseph A. Baza	0	0	0	0	0	0	0	0	
14		Computer System Analyst I	Joseph J. Nedelberg	0	0	0	0	0	0	0	0	
15		Systems & Programming Adm	Bernie B. Camacho	0	0	0	0	0	0	0	0	
16		Computer Programmer/Anal Sup	Christine M. San Agustina	0	0	0	0	0	0	0	0	
17		Computer Systems Analyst I	Geerat B. Cabo	0	0	0	0	0	0	0	0	
18		Computer Systems Analyst I	Dean C. Rivera	0	0	0	0	0	0	0	0	
19		Telephone Network Coord	Eric H. Rasell	0	0	0	0	0	0	0	0	
20		Computer Operator III	John S. Bantua	0	0	0	0	0	0	0	0	
Total:				\$0	\$0	\$0	\$0	\$0	\$0	\$0	\$0	

- 1/ 10% of reg. rate, applicable from open- team, employee must work 4 hours consecutive after fgum for entitlement of the pay
- 2/ Applies to law enforcement personnel
- 3/ Applies to solid waste employees
- 4/ 1 1/2 of reg. rate of pay from 12am Friday to 12 midnight Sunday
- 5/ 1 1/2 of reg. rate of pay on daily work exceeding 8 hours
- 6/ Applicable only to CRD ambulatory service personnel, 15% of reg. rate of pay

ORIGINAL

FUNCTIONAL AREA: FISCAL AND ADMINISTRATIVE  
DEPARTMENT/AGENCY: DEPARTMENT OF ADMINISTRATION  
PROGRAM: DATA PROCESSING DIVISION  
FUND: GENERAL FUND  
As of: 4 April 2011

(A) No.	(B) Position Title	(C) Name of Incumbent	(D) Grade Step	(E) Salary	(F) Overtime	(G) Specialty	(H) Incumbent		(I) Amt.	(J) Subtotal	(K) Retirement (1 * 27.46%)	(L) Retire (DDI) (\$18.40 * 60P)	(M) Social Security (6.2% * J)	(N) Medicare (1.45% * J)	(O) Benefits		(P) Medical (Presubid)	(Q) Dental (Presubid)	(R) Total Benefits (K thru Q)	(S) (J + R) TOTAL	
							Date	Incumbent							Life	Life					
1	64001 Data Processing Manager	Joseph C. Manibusan	O-01	\$33,811	\$0	\$0	1/2/2012		\$0	\$33,811	\$9,285	\$0	\$0	\$490	\$174	\$174	\$0	\$0	\$0	\$9,949	\$43,760
2	64002 Administrative Officer	Francis F. Cruz	L-07	35,802	0	0	8/14/2011	221	0	34,603	9,892	479	0	522	174	174	0	0	0	13,772	49,795
3	64011 Computer Systems Analyst II	Geordina S. Delgado	M-17	54,731	0	0	12/11/2011	0	0	54,731	15,029	0	0	0	0	0	0	0	0	15,203	69,934
4	64014 Computer Systems Analyst II	Meyer Ann D. Medada	M-15	51,092	0	0	7/20/2012	0	0	51,092	14,030	0	0	0	0	0	0	0	0	14,945	66,037
5	64035 Computer Systems Analyst II	Stacey Ann L. G. Minnoz	M-12	46,082	0	0	7/16/2011	403	0	45,685	12,765	0	0	0	0	0	0	0	0	13,613	74,332
6	64018 Computer Systems Analyst II	Michael S. Cruz	M-17	54,731	0	0	3/29/2011	1,117	0	55,848	15,336	0	0	0	0	0	0	0	0	18,384	74,332
7	2685 Teleproc Network Coord	Francis R. Perez	L-17	43,784	0	0	8/27/2012	0	0	43,784	12,023	479	0	0	0	0	0	0	0	13,502	63,043
8	64022 Computer Ops Supervisor	Ethaine J. Cruz	L-14	45,648	0	0	4/12/2011	799	0	46,447	12,754	0	0	0	0	0	0	0	0	13,754	64,772
9	64016 Computer Systems Analyst I	Romana M. Palomo	L-13	45,648	0	0	10/18/2012	0	0	45,648	12,535	0	0	0	0	0	0	0	0	13,535	64,446
10	64046 Teleproc Network Coord	Victor S. N. Soto	L-13	38,155	0	0	10/10/2011	0	0	38,155	10,477	0	0	0	0	0	0	0	0	10,796	52,055
11	Geographic Info Syst/Anal Mgr	Jesse J. Rojas	O-09	49,026	0	0	11/11/2010	1,550	0	50,576	13,888	0	0	0	0	0	0	0	0	14,796	65,372
12	Computer Programmer	Kenneth A. Cruz	L-01	21,389	0	0	7/12/2011	334	0	21,723	5,965	479	0	0	0	0	0	0	0	6,268	31,351
13	Computer Analyst II	Joseph A. Baza	M-09	41,584	0	0	8/18/2011	239	0	41,823	11,485	0	0	0	0	0	0	0	0	15,000	56,823
14	Computer System Analyst I	Joseph J. Nedeleg	L-10	39,780	0	0	9/17/2011	116	0	39,896	10,955	0	0	0	0	0	0	0	0	11,708	51,604
15	Systems & IT Programming Adm	Beaegno B. Camacho	UNCL	55,274	0	0	n/a	0	0	55,274	15,178	0	0	0	0	0	0	0	0	19,581	74,855
16	Computer Programmer/Anal Sup	Christine M. San Agustin	UNCL	50,317	0	0	n/a	0	0	50,317	13,927	0	0	0	0	0	0	0	0	17,092	67,809
17	Computer Systems Analyst I	General B. Cano	L-12	42,613	0	0	3/12/2012	0	0	42,613	11,702	0	0	0	0	0	0	0	0	12,709	55,322
18	Computer Systems Analyst I	Dean C. Rivera	L-09	38,654	0	0	3/10/2012	0	0	38,654	10,559	0	0	0	0	0	0	0	0	11,718	50,372
19	Teleproc Network Coord	Eric H. Rosel	L-11	35,618	0	0	10/10/2012	0	0	35,618	9,781	479	0	0	0	0	0	0	0	10,260	46,632
20	Computer Operator III	John S. Bamba	J-11	35,618	0	0	1/22/2012	0	0	35,618	9,781	479	0	0	0	0	0	0	0	10,260	46,632
				Total:	\$859,557	\$0	\$0		\$4,779	\$864,336	\$237,347	\$2,874	\$3,427	\$11,104	\$3,480	\$47,084	\$2,750	\$308,066	\$1,172,402		

ORIGINAL

Government of Guam  
 Fiscal Year 2011  
 Agency Staffing Pattern  
 CURRENT

[BBMR SP-1]

No.	Position Number	Position Title	Name of Incumbent	Holiday Pay	Special Pay Categories						Total
					1/ Night Differential Pay - 10%	2/ Hazard Pay - 10%	3/ Ascent Pay - 8%	4/ Night Sunday Pay - 1.5%	5/ Night Pay - 1.5%	6/ EMT Pay - 15%	
1	64001	Data Processing Manager	Joseph C. Manibusan	\$0	\$0	\$0	\$0	\$0	\$0	\$0	\$0
2	64002	Administrative Officer	Francis F. Cruz	0	0	0	0	0	0	0	0
3	64011	Computer Systems Analyst II	Gerardino S. Delgado	0	0	0	0	0	0	0	0
4	64014	Computer Systems Analyst II	Mary Ann D. Mendola	0	0	0	0	0	0	0	0
5	64035	Computer Systems Analyst II	Shirley Ann L. G. Matobez	0	0	0	0	0	0	0	0
6	64018	Computer Systems Analyst II	Michael S. Cruz	0	0	0	0	0	0	0	0
7	2685	Telephone Network Coord	Francis R. Perez	0	0	0	0	0	0	0	0
8	64022	Computer Ops Supervisor	Eduard J. Cruz	0	0	0	0	0	0	0	0
9	64016	Computer Systems Analyst I	Roman M. Palomo	0	0	0	0	0	0	0	0
10	64040	Telephone Network Coord	Victor S. N. Sato	0	0	0	0	0	0	0	0
11		Geographic Info System Mgr	Jesse J. Rojas	0	0	0	0	0	0	0	0
12		Computer Programmer	Kenneth J. Cruz	0	0	0	0	0	0	0	0
13		Computer Analyst II	Joseph A. Baza	0	0	0	0	0	0	0	0
14		Computer System Analyst I	Joseph J. Neldog	0	0	0	0	0	0	0	0
15		Systems & Programming Adm	Belgiano B. Canatcho	0	0	0	0	0	0	0	0
16		Computer Programmer/Anal Sup	Chedine M. San Agustin	0	0	0	0	0	0	0	0
17		Computer Systems Analyst I	Gerard B. Carro	0	0	0	0	0	0	0	0
18		Computer Systems Analyst I	Dean C. Rivera	0	0	0	0	0	0	0	0
19		Telephone Network Coord	Eric H. Rosel	0	0	0	0	0	0	0	0
20		Computer Operator III	John S. Bamba	0	0	0	0	0	0	0	0
Total:				\$0	\$0	\$0	\$0	\$0	\$0	\$0	\$0

- 1/ 10% of reg. rate, applicable from 6pm- 6am, employee must work 4 hours consecutive after 6pm for entitlement of the pay
- 2/ Applies to law enforcement personnel
- 3/ Applies to solid waste employees
- 4/ 1 1/2 of reg. rate of pay from 12am Friday to 12 midnight Sunday
- 5/ 1 1/2 of reg. rate of pay on daily work exceeding 8 hours
- 6/ Applicable only to GFD ambulance service personnel, 15% of reg. rate of pay

ORIGINAL

**Government of Guam  
Biennial Budget**

**Federal Program Inventory**

**FY 2011 (Current) / FY 2012 & FY 2013 Funding (Estimated)**

[BBMR FP-1]Rev

**FUNCTION: FISCAL AND ADMINISTRATIVE  
DEPARTMENT/AGENCY: DEPARTMENT OF ADMINISTRATION  
PROGRAM: DATA PROCESSING DIVISION**

Federal Grantor Agency / Federal Project Title	C.F.D.A. No. / Enabling Authority	Grant Award Number	Match Ratio Federal / Local:	FY 2011		Estimated Funding	Local Matching Funds	FY 2012 & FY 2013		100% Federal Grants	Grant Period
				Received / Projected				Federal Matching Funds			
NONE											

ORIGINAL

Function : FISCAL AND ADMINISTRATIVE  
Department/Agency: DEPARTMENT OF ADMINISTRATION  
Program: DATA PROCESSING DIVISION

**EQUIPMENT/CAPITAL LISTING:**

Description	Quantity	Percentage of Use	Comments
<b>FY 2012</b>			
SEE ATTACHED			
<b>FY 2013</b>			
SEE ATTACHED			

SPACE REQUIREMENT (for Personnel and Equipment/Capital)	Total Program Space (Sq. Ft.):		Total Program Space Occupied (Sq. Ft.):	
Description	Square Feet	Percent of Total Program Space		Comments
<b>FY 2012</b>				
<b>FY 2013</b>				

Dept: 0640 Asset type:

G/L Acct	Count:	1	0640	Dept	Dept Desc	G/L Acct	Asset No	Description	Acq Date	Acq Cost	P/O No
0640	DATA	PROCESSING	0640	DATA	PROCESSING	131918120	4150004954	HP NETSERVER 6/200 LH PRO	3/24/1998	6,272.00	P976A06692
0640	DATA	PROCESSING	0640	DATA	PROCESSING	131918120				6,272.00	
0640	DATA	PROCESSING	0640	DATA	PROCESSING	139018120	3170000137	VAN (CARGO N/M)	9/30/1997	19,988.00	P976A05599
0640	DATA	PROCESSING	0640	DATA	PROCESSING	139018120	4040000089	DOUBLE PEDESTAL DESK	9/15/1989	389.00	P896A06828
0640	DATA	PROCESSING	0640	DATA	PROCESSING	139018120	4040000284	DESK, DOUBLE PEDESTAL	4/16/1990	345.00	P906A04303
0640	DATA	PROCESSING	0640	DATA	PROCESSING	139018120	4040000285	DESK, DOUBLE PEDESTAL	4/16/1990	345.00	P906A04303
0640	DATA	PROCESSING	0640	DATA	PROCESSING	139018120	4040000286	DESK, DOUBLE PEDESTAL	4/16/1990	345.00	P906A04303
0640	DATA	PROCESSING	0640	DATA	PROCESSING	139018120	4040000287	DESK, DOUBLE PEDESTAL	4/16/1990	345.00	P906A04303
0640	DATA	PROCESSING	0640	DATA	PROCESSING	139018120	4040000288	DESK, DOUBLE PEDESTAL	4/16/1990	345.00	P906A04303
0640	DATA	PROCESSING	0640	DATA	PROCESSING	139018120	4040000289	DESK, DOUBLE PEDESTAL	4/16/1990	345.00	P906A04303
0640	DATA	PROCESSING	0640	DATA	PROCESSING	139018120	4040000290	DESK, DOUBLE PEDESTAL	4/16/1990	345.00	P906A04303
0640	DATA	PROCESSING	0640	DATA	PROCESSING	139018120	4040000291	DESK, DOUBLE PEDESTAL	4/16/1990	345.00	P906A04303
0640	DATA	PROCESSING	0640	DATA	PROCESSING	139018120	4040000292	DESK, DOUBLE PEDESTAL	4/16/1990	345.00	P906A04303
0640	DATA	PROCESSING	0640	DATA	PROCESSING	139018120	4040000293	DESK, DOUBLE PEDESTAL	4/16/1990	345.00	P906A04303
0640	DATA	PROCESSING	0640	DATA	PROCESSING	139018120	4040000294	DESK, DOUBLE PEDESTAL	4/16/1990	345.00	P906A04303
0640	DATA	PROCESSING	0640	DATA	PROCESSING	139018120	4040000295	DESK, DOUBLE PEDESTAL	4/16/1990	345.00	P906A04303
0640	DATA	PROCESSING	0640	DATA	PROCESSING	139018120	4040000296	DESK, DOUBLE PEDESTAL	4/16/1990	345.00	P906A04303
0640	DATA	PROCESSING	0640	DATA	PROCESSING	139018120	4050000189	WORKSTATION	11/11/1997	46,566.72	P976A06469
0640	DATA	PROCESSING	0640	DATA	PROCESSING	139018120	4080000224	TABLE, DATA	5/01/1990	399.00	P906A04274
0640	DATA	PROCESSING	0640	DATA	PROCESSING	139018120	4080000225	TABLE, WORKING	5/01/1990	345.00	P906A04274
0640	DATA	PROCESSING	0640	DATA	PROCESSING	139018120	4110000115	CHAIR, EXECUTIVE	5/01/1990	499.00	P906A04274
0640	DATA	PROCESSING	0640	DATA	PROCESSING	139018120	4120000035	SWIVEL CHAIR CR-G19KS	9/15/1989	299.00	P896A06828
0640	DATA	PROCESSING	0640	DATA	PROCESSING	139018120	4120000036	SWIVEL CHAIR CR-G19KS	9/15/1989	299.00	P896A06828
0640	DATA	PROCESSING	0640	DATA	PROCESSING	139018120	4120000037	SWIVEL CHAIR CR-G19KS	9/15/1989	299.00	P896A06828
0640	DATA	PROCESSING	0640	DATA	PROCESSING	139018120	4120000038	SWIVEL CHAIR CR-G19KS	9/15/1989	299.00	P896A06828
0640	DATA	PROCESSING	0640	DATA	PROCESSING	139018120	4120000039	SWIVEL CHAIR CR-G19KS	9/15/1989	299.00	P896A06828
0640	DATA	PROCESSING	0640	DATA	PROCESSING	139018120	4120000104	CHAIR, BIO-TECH	5/01/1990	399.00	P906A04274
0640	DATA	PROCESSING	0640	DATA	PROCESSING	139018120	4120000105	CHAIR, BIO-TECH	5/01/1990	279.00	P906A04304
0640	DATA	PROCESSING	0640	DATA	PROCESSING	139018120	4120000111	CHAIR	4/16/1990	465.00	P906A06275
0640	DATA	PROCESSING	0640	DATA	PROCESSING	139018120	4120000127	CHAIR	8/10/1990	399.00	P906A06275
0640	DATA	PROCESSING	0640	DATA	PROCESSING	139018120	4120000128	CHAIR	8/10/1990	399.00	P906A06275
0640	DATA	PROCESSING	0640	DATA	PROCESSING	139018120	4120000132	CHAIR	8/10/1990	399.00	P906A06275
0640	DATA	PROCESSING	0640	DATA	PROCESSING	139018120	4120000130	CHAIR	8/10/1990	399.00	P906A06275
0640	DATA	PROCESSING	0640	DATA	PROCESSING	139018120	4120000131	CHAIR	8/10/1990	399.00	P906A06275
0640	DATA	PROCESSING	0640	DATA	PROCESSING	139018120	4120000133	CHAIR	8/10/1990	399.00	P906A06275
0640	DATA	PROCESSING	0640	DATA	PROCESSING	139018120	4120000134	CHAIR	8/10/1990	399.00	P906A06275
0640	DATA	PROCESSING	0640	DATA	PROCESSING	139018120	4120000135	CHAIR	8/10/1990	399.00	P906A06275
0640	DATA	PROCESSING	0640	DATA	PROCESSING	139018120	4120000136	CHAIR	8/10/1990	399.00	P906A06275
0640	DATA	PROCESSING	0640	DATA	PROCESSING	139018120	4120000137	CHAIR	8/10/1990	399.00	P906A06275
0640	DATA	PROCESSING	0640	DATA	PROCESSING	139018120	4130000001	CPU UPGRADE MAIN STORAGE MODEL	5/12/1989	514,500.00	P896A02311
0640	DATA	PROCESSING	0640	DATA	PROCESSING	139018120	4130000002	IBM DIRECT ACCESS STORAGE	6/29/1989	44,604.00	P896A03670
0640	DATA	PROCESSING	0640	DATA	PROCESSING	139018120	4130000003	IBM DIRECT ACCESS STORAGE	6/29/1989	44,604.00	P896A03670
0640	DATA	PROCESSING	0640	DATA	PROCESSING	139018120	4130000004	IBM DIRECT ACCESS STORAGE	6/29/1989	44,604.00	P896A03670
0640	DATA	PROCESSING	0640	DATA	PROCESSING	139018120	4130000005	IBM CHANNEL DIRECT ACCESS STOR	6/29/1989	55,125.00	P896A03670
0640	DATA	PROCESSING	0640	DATA	PROCESSING	139018120	4130000007	HDR MODEL 3100-50KVA POWER SYS	2/08/1990	49,900.00	P906A00070
0640	DATA	PROCESSING	0640	DATA	PROCESSING	139018120	4130000008	HDR MODEL 3100-30KVA POWER SYS	2/08/1990	35,680.00	P906A00070
0640	DATA	PROCESSING	0640	DATA	PROCESSING	139018120	4130000039	COMMUNICATION CONTROLLER	10/21/1991	52,583.00	P916A007276
0640	DATA	PROCESSING	0640	DATA	PROCESSING	139018120	4130000040	LOW-SPEED SCANNER	10/21/1991	12,257.00	P916A007276

ORIGINAL

Fixed Assets System  
 Fixed Assets by Department

Dept	Dept Desc	G/L Acct	Asset No	Description	Acq Date	Acq Cost	P/O No
0640	DATA PROCESSING	139018120	4130000041	LIC. TYPE 1	10/21/1991	2,507.00	P916A07276
0640	DATA PROCESSING	139018120	4130000042	LIC. TYPE 1	10/21/1991	2,507.00	P916A07276
0640	DATA PROCESSING	139018120	4130000043	LIC. TYPE 1	10/21/1991	2,507.00	P916A07276
0640	DATA PROCESSING	139018120	4130000044	LIC. TYPE 1	10/21/1991	2,507.00	P916A07276
0640	DATA PROCESSING	139018120	4130000045	LIC. TYPE 1	10/21/1991	2,507.00	P916A07276
0640	DATA PROCESSING	139018120	4130000046	LIC. TYPE 1	10/21/1991	2,507.00	P916A07276
0640	DATA PROCESSING	139018120	4130000047	LIC. TYPE 1	10/21/1991	2,507.00	P916A07276
0640	DATA PROCESSING	139018120	4130000048	LIC. TYPE 1	10/21/1991	2,507.00	P916A07276
0640	DATA PROCESSING	139018120	4130000049	LIC. TYPE 1	10/21/1991	2,507.00	P916A07276
0640	DATA PROCESSING	139018120	4140000092	DISPLAY STATION	6/29/1989	677.00	P896A03670
0640	DATA PROCESSING	139018120	4140000093	DISPLAY STATION	6/29/1989	677.00	P896A03670
0640	DATA PROCESSING	139018120	4140000094	DISPLAY STATION	6/29/1989	677.00	P896A03670
0640	DATA PROCESSING	139018120	4140000095	DISPLAY STATION	6/29/1989	677.00	P896A03670
0640	DATA PROCESSING	139018120	4140000096	DISPLAY STATION	6/29/1989	677.00	P896A03670
0640	DATA PROCESSING	139018120	4140000097	DISPLAY STATION	6/29/1989	677.00	P896A03670
0640	DATA PROCESSING	139018120	4140000098	DISPLAY STATION	6/29/1989	677.00	P896A03670
0640	DATA PROCESSING	139018120	4140000099	DISPLAY STATION	6/29/1989	677.00	P896A03670
0640	DATA PROCESSING	139018120	4140000100	DISPLAY STATION	6/29/1989	677.00	P896A03670
0640	DATA PROCESSING	139018120	4140000101	DISPLAY STATION	6/29/1989	677.00	P896A03670
0640	DATA PROCESSING	139018120	4140000102	DISPLAY STATION	6/29/1989	677.00	P896A03670
0640	DATA PROCESSING	139018120	4140000103	DISPLAY STATION	6/29/1989	677.00	P896A03670
0640	DATA PROCESSING	139018120	4140000104	DISPLAY STATION	6/29/1989	677.00	P896A03670
0640	DATA PROCESSING	139018120	4140000105	DISPLAY STATION	6/29/1989	677.00	P896A03670
0640	DATA PROCESSING	139018120	4140000106	DISPLAY STATION	6/29/1989	677.00	P896A03670
0640	DATA PROCESSING	139018120	4140000107	DISPLAY STATION	6/29/1989	677.00	P896A03670
0640	DATA PROCESSING	139018120	4140000108	DISPLAY STATION	6/29/1989	677.00	P896A03670
0640	DATA PROCESSING	139018120	4140000109	DISPLAY STATION	6/29/1989	677.00	P896A03670
0640	DATA PROCESSING	139018120	4140000110	DISPLAY STATION	6/29/1989	677.00	P896A03670
0640	DATA PROCESSING	139018120	4140000165	PS/2 COLOR DISPLAY WITH STAND	10/30/1989	434.00	P896A06483
0640	DATA PROCESSING	139018120	4140000166	PS/2 COLOR DISPLAY WITH STAND	10/30/1989	434.00	P896A06483
0640	DATA PROCESSING	139018120	4140000167	PS/2 COLOR DISPLAY WITH STAND	10/30/1989	434.00	P896A06483
0640	DATA PROCESSING	139018120	4140000168	PS/2 COLOR DISPLAY WITH STAND	10/30/1989	434.00	P896A06483
0640	DATA PROCESSING	139018120	4140000169	PS/2 COLOR DISPLAY WITH STAND	10/30/1989	434.00	P896A06483
0640	DATA PROCESSING	139018120	4140000170	PS/2 COLOR DISPLAY WITH STAND	10/30/1989	434.00	P896A06483
0640	DATA PROCESSING	139018120	4140000171	PS/2 COLOR DISPLAY WITH STAND	10/30/1989	434.00	P896A06483
0640	DATA PROCESSING	139018120	4140000172	PS/2 COLOR DISPLAY WITH STAND	10/30/1989	434.00	P896A06483
0640	DATA PROCESSING	139018120	4140000174	PS/2 COLOR DISPLAY WITH STAND	10/23/1989	433.00	P896A06592
0640	DATA PROCESSING	139018120	4140000356	PS/2 COLOR DISPLAY	12/10/1990	423.00	P906A07088
0640	DATA PROCESSING	139018120	4140000357	PS/2 COLOR DISPLAY	12/10/1990	423.00	P906A07088
0640	DATA PROCESSING	139018120	4140000358	PS/2 COLOR DISPLAY	12/10/1990	423.00	P906A07088
0640	DATA PROCESSING	139018120	4140000359	PS/2 COLOR DISPLAY	12/10/1990	423.00	P906A07088
0640	DATA PROCESSING	139018120	4140000360	PS/2 COLOR DISPLAY	12/10/1990	423.00	P906A07088
0640	DATA PROCESSING	139018120	4140000361	PS/2 COLOR DISPLAY	12/10/1990	423.00	P906A07088
0640	DATA PROCESSING	139018120	4140000362	PS/2 COLOR DISPLAY	12/10/1990	423.00	P906A07088
0640	DATA PROCESSING	139018120	4140000363	PS/2 COLOR DISPLAY	12/10/1990	423.00	P906A07088
0640	DATA PROCESSING	139018120	4140000489	INFO WINDOW TERMINAL	11/13/1991	854.00	P916A06106
0640	DATA PROCESSING	139018120	4140000490	INFO WINDOW TERMINAL	11/13/1991	854.00	P916A06106
0640	DATA PROCESSING	139018120	4140000491	INFO WINDOW TERMINAL	11/13/1991	854.00	P916A06106
0640	DATA PROCESSING	139018120	4140000492	INFO WINDOW TERMINAL	11/13/1991	854.00	P916A06106
0640	DATA PROCESSING	139018120	4140000493	INFO WINDOW TERMINAL	11/13/1991	854.00	P916A06106
0640	DATA PROCESSING	139018120	4140000494	INFO WINDOW TERMINAL	11/13/1991	854.00	P916A06106
0640	DATA PROCESSING	139018120	4140000495	INFO WINDOW TERMINAL	11/13/1991	854.00	P916A06106

ORIGINAL



Dept	Dept Desc	G/L Acct	Asset No	Description	Acq Date	Acq Cost	P/O No
0640	DATA PROCESSING	139018120	4140000496	INFO WINDOW TERMINAL	11/13/1991	854.00	P916A06106
0640	DATA PROCESSING	139018120	4140000497	INFO WINDOW TERMINAL	11/13/1991	854.00	P916A06106
0640	DATA PROCESSING	139018120	4140000498	INFO WINDOW TERMINAL	11/13/1991	854.00	P916A06106
0640	DATA PROCESSING	139018120	4140000538	COLOR DISPLAY PS/2	1/31/1992	460.00	P916A08566
0640	DATA PROCESSING	139018120	4140000668	COLOR DISPLAY W/STAND	4/08/1992	460.00	P916A06555
0640	DATA PROCESSING	139018120	4140000669	COLOR DISPLAY W/STAND	4/08/1992	473.00	P916A06555
0640	DATA PROCESSING	139018120	4140000670	COLOR DISPLAY W/STAND	4/08/1992	473.00	P916A06556
0640	DATA PROCESSING	139018120	4140000672	COLOR DISPLAY	4/08/1992	473.00	P916A06554
0640	DATA PROCESSING	139018120	4140000673	COLOR DISPLAY	4/08/1992	473.00	P916A06554
0640	DATA PROCESSING	139018120	4140000674	COLOR DISPLAY	4/08/1992	473.00	P916A06554
0640	DATA PROCESSING	139018120	4140000856	DISPLAY STATION	6/29/1989	677.00	P896A03670
0640	DATA PROCESSING	139018120	4140001585	ACERVIEW 34T 141N	5/02/1996	335.00	P966A03925
0640	DATA PROCESSING	139018120	4140001586	ACERVIEW 34T 141N	5/02/1996	335.00	P966A03925
0640	DATA PROCESSING	139018120	4140001631	TERMINAL -ULTRA VGA 1280 17" D	3/03/1998	785.00	P976A06692
0640	DATA PROCESSING	139018120	4140001632	TERMINAL -ULTRA VGA 1280 17" D	3/03/1998	785.00	P976A06692
0640	DATA PROCESSING	139018120	4150000500	IBM 3860 MODEL 4 CONTROL UNIT	5/08/1989	6,750.00	P896A03364
0640	DATA PROCESSING	139018120	4150000632	PS/2 MODEL 50Z	11/02/1989	2,242.00	P896A06483
0640	DATA PROCESSING	139018120	4150000633	PS/2 MODEL 50Z	11/02/1989	2,242.00	P896A06483
0640	DATA PROCESSING	139018120	4150000634	PS/2 MODEL 50Z	11/02/1989	2,242.00	P896A06483
0640	DATA PROCESSING	139018120	4150000635	PS/2 MODEL 50Z	10/30/1989	2,653.00	P896A06483
0640	DATA PROCESSING	139018120	4150000636	PS/2 MODEL 50Z	10/30/1989	2,242.00	P896A06483
0640	DATA PROCESSING	139018120	4150000637	PS/2 MODEL 50Z	10/30/1989	2,242.00	P896A06483
0640	DATA PROCESSING	139018120	4150000638	COMPUTER PS/2 MODEL 50Z	10/30/1989	2,242.00	P896A06483
0640	DATA PROCESSING	139018120	4150000639	COMPUTER PS/2 MODEL 50Z	10/30/1989	2,242.00	P896A06483
0640	DATA PROCESSING	139018120	4150000641	PS/2 MODEL 50Z	10/23/1989	2,242.00	P896A06483
0640	DATA PROCESSING	139018120	4150000669	PS/2 MODEL 031 W/CONNECTIONS	12/10/1990	2,605.00	P906A07088
0640	DATA PROCESSING	139018120	4150002066	PS/2 MODEL 070 W/CONNECTIONS	12/10/1990	4,360.00	P906A07088
0640	DATA PROCESSING	139018120	4150002069	PS/2 MODEL 070 W/CONNECTIONS	12/10/1990	4,360.00	P906A07088
0640	DATA PROCESSING	139018120	4150002070	PS/2 MODEL 031 W/CONNECTIONS	12/12/1990	2,605.00	P906A07088
0640	DATA PROCESSING	139018120	4150002071	PS/2 MODEL 031 W/CONNECTIONS	12/10/1990	2,605.00	P906A07088
0640	DATA PROCESSING	139018120	4150002072	PS/2 MODEL 031 W/CONNECTIONS	12/10/1990	2,605.00	P906A07088
0640	DATA PROCESSING	139018120	4150002073	PS/2 MODEL 031 W/CONNECTIONS	12/10/1990	2,605.00	P906A07088
0640	DATA PROCESSING	139018120	4150002145	HARDWARE: CONTROL SYSTEM	12/10/1990	7,843.00	P906A07088
0640	DATA PROCESSING	139018120	4150002410	PS/2 COMPUTER	11/19/1991	3,235.00	P916A06886
0640	DATA PROCESSING	139018120	4150002440	MICROPROCESSOR	11/31/1992	11,113.00	P916A08566
0640	DATA PROCESSING	139018120	4150004193	COMPUTER SET DTK 486-2/66	11/15/1994	1,950.00	P946A06694
0640	DATA PROCESSING	139018120	4150004194	COMPUTER SET DTK 684-2/66	11/15/1994	1,950.00	P946A06694
0640	DATA PROCESSING	139018120	4150004682	COMPUTER	5/02/1996	1,790.00	P966A03925
0640	DATA PROCESSING	139018120	4150004683	COMPUTER	6/13/1996	1,790.00	P966A03925
0640	DATA PROCESSING	139018120	4150004684	COMPUTER	5/02/1996	1,790.00	P966A03925
0640	DATA PROCESSING	139018120	4150004710	COMPUTER, PC-133 W/COMPONENTS	7/12/1996	3,030.74	P966A03387
0640	DATA PROCESSING	139018120	4150004726	COMPUTER SYS INTEL PENTIUM PS-	5/02/1996	2,293.90	P966A03387
0640	DATA PROCESSING	139018120	4150004727	COMPUTER SYS INTEL PENTIUM PS-	5/02/1996	2,293.90	P966A03387
0640	DATA PROCESSING	139018120	4150004849	COMPUTER -MICRON ATO MODEL BOM	7/17/1997	2,636.00	P976A04501
0640	DATA PROCESSING	139018120	4150004850	COMPUTER -MICRON ATO MODEL BOM	7/17/1997	2,636.00	P976A04501
0640	DATA PROCESSING	139018120	4150004955	HP NEWSERVER 6/200 LH PRO	3/24/1998	6,272.00	P976A06692
0640	DATA PROCESSING	139018120	4150004998	COMPUTER -PII 266MHZ	12/31/1997	3,115.00	P976A06692
0640	DATA PROCESSING	139018120	4150005000	COMPUTER -PII 266MHZ	12/31/1997	3,115.00	P976A06692
0640	DATA PROCESSING	139018120	4150005001	COMPUTER -PII 266MHZ	12/31/1997	3,115.00	P976A06692

ORIGINAL

Fixed Assets System  
 Fixed Assets by Department

Dept	Dept Desc	G/L Acct	Asset No	Description	Acq Date	Acq Cost	P/O No
0640	DATA PROCESSING	139018120	4150005003	COMPUTER -PII 266MHZ	12/31/1997	3,115.00	P976A06692
0640	DATA PROCESSING	139018120	4150005004	COMPUTER -PII 266MHZ	12/31/1997	3,115.00	P976A06692
0640	DATA PROCESSING	139018120	4150005005	COMPUTER -PII 266MHZ	12/31/1997	3,115.00	P976A06692
0640	DATA PROCESSING	139018120	4150005020	NETWORK SERVER - COMPUTER PROC	3/24/1998	700.00	P976A06692
0640	DATA PROCESSING	139018120	4150005021	NETWORK SERVER - COMPUTER PROC	3/24/1998	700.00	P976A06692
0640	DATA PROCESSING	139018120	4150005223	COMPUTER -BUS MM P166MMX W/MON	11/14/1997	1,654.00	P976A06692
0640	DATA PROCESSING	139018120	4150005223	COMPUTER -BUS MM P166MMX W/MON	11/14/1997	1,654.00	P976A06692
0640	DATA PROCESSING	139018120	4150005223	COMPUTER -BUS MM P166MMX W/MON	11/14/1997	1,915.00	P976A06692
0640	DATA PROCESSING	139018120	4150005223	COMPUTER -BUS MM P166MMX W/MON	11/14/1997	1,915.00	P976A06692
0640	DATA PROCESSING	139018120	4150005226	COMPUTER -BUS MM P166MMX W/MON	12/31/1997	2,965.00	P976A06692
0640	DATA PROCESSING	139018120	4150005229	COMPUTER -PII 266MHZ	12/31/1997	2,965.00	P976A06692
0640	DATA PROCESSING	139018120	4150005511	COMPUTER MONITOR	9/30/2002	1,947.00	P026A06122
0640	DATA PROCESSING	139018120	4150005515	COMPUTER MONITOR	9/30/2002	2,399.00	P026A06122
0640	DATA PROCESSING	139018120	4150005516	COMPUTER MONITOR	9/30/2002	2,399.00	P026A06122
0640	DATA PROCESSING	139018120	4170000160	PC SOFTWARE 35 DISPLAYWRITE	10/30/1989	321.00	P896A06483
0640	DATA PROCESSING	139018120	4170000161	PC SOFTWARE 30 WITH ACCE.	10/30/1989	495.00	P896A06483
0640	DATA PROCESSING	139018120	4170000162	PC SOFTWARE 30 WITH ACCE.	10/30/1989	353.00	P896A06483
0640	DATA PROCESSING	139018120	4170000564	SOFTWARE, SYSTEM ARCHITECT	11/22/1991	1,345.00	P916A07967
0640	DATA PROCESSING	139018120	4170000565	SOFTWARE, ANNUAL SUPPORT	11/22/1991	350.00	P916A07967
0640	DATA PROCESSING	139018120	4170000716	PS/2	11/12/1991	2,090.00	P916A06885
0640	DATA PROCESSING	139018120	4170000717	PS/2	11/12/1991	2,090.00	P916A06885
0640	DATA PROCESSING	139018120	4170000718	PS-2	4/08/1992	1,948.00	P916A06555
0640	DATA PROCESSING	139018120	4170000719	PS-2	4/08/1992	1,948.00	P916A06555
0640	DATA PROCESSING	139018120	4170000720	PS/2	4/08/1992	2,090.00	P916A06555
0640	DATA PROCESSING	139018120	4170001111	FLOW CHARTING #3	11/19/1992	265.00	P916A08397
0640	DATA PROCESSING	139018120	4170001465	PROCESSOR GROUP J6 BASIC	10/12/1993	44,640.00	P936A06989
0640	DATA PROCESSING	139018120	4170001466	PROCESSOR GROUP J6 BASIC	10/12/1993	5,769.00	P936A06989
0640	DATA PROCESSING	139018120	4170001467	PROCESSOR GROUP J6 BASIC	10/12/1993	5,738.00	P936A06989
0640	DATA PROCESSING	139018120	4170001468	PROCESSOR GROUP J6 BASIC	10/12/1993	5,769.00	P936A06989
0640	DATA PROCESSING	139018120	4170001469	PROCESSOR GROUP J6 BASIC	10/12/1993	8,438.00	P936A06990
0640	DATA PROCESSING	139018120	4170001938	ONETIME CHARGE BASIC SOFTWARE	11/21/1994	5,495.00	P946A05850
0640	DATA PROCESSING	139018120	4170001939	OTC BASIC 11-20 SOFTWARE	11/21/1994	2,500.00	P946A05850
0640	DATA PROCESSING	139018120	4170001940	OTC BASIC 21-100 SOFTWARE	11/21/1994	5,000.00	P946A05850
0640	DATA PROCESSING	139018120	4170002346	TOKEN RING ADAPTER	6/03/1996	299.00	P966A03844
0640	DATA PROCESSING	139018120	4170002347	TOKEN RING ADAPTER	6/03/1996	299.00	P966A03844
0640	DATA PROCESSING	139018120	4170002348	TOKEN RING ADAPTER	6/03/1996	299.00	P966A03844
0640	DATA PROCESSING	139018120	4170002349	TOKEN RING ADAPTER	6/03/1996	299.00	P966A03844
0640	DATA PROCESSING	139018120	4170002470	SOFTWARE -4GB ULTRA SCSI HOT S	3/24/1998	1,295.00	P976A06692
0640	DATA PROCESSING	139018120	4170002471	SOFTWARE -4GB ULTRA SCSI HOT S	3/24/1998	1,295.00	P976A06692
0640	DATA PROCESSING	139018120	4170002472	SOFTWARE -4GB ULTRA SCSI HOT S	3/24/1998	1,295.00	P976A06692
0640	DATA PROCESSING	139018120	4170002473	SOFTWARE -4GB ULTRA SCSI HOT S	3/24/1998	1,295.00	P976A06692
0640	DATA PROCESSING	139018120	4170002485	SOFTWARE-MS WINDOWS NT SVR V4	3/24/1998	1,015.00	P976A06692
0640	DATA PROCESSING	139018120	4170002486	SOFTWARE-MS WINDOWS NT SVR V4	3/24/1998	1,015.00	P976A06692
0640	DATA PROCESSING	139018120	4170002487	SOFTWARE -NETWORK OS INSTALL/N	3/24/1998	1,000.00	P976A06692
0640	DATA PROCESSING	139018120	4170002488	SOFTWARE -NETWORK OS INSTALL/N	3/24/1998	1,000.00	P976A06692
0640	DATA PROCESSING	139018120	4170002502	SOFTWARE -DATASMART EHT V.35	11/23/1997	1,249.00	P976A06542
0640	DATA PROCESSING	139018120	4170002503	SOFTWARE -DATASMART ETH V.35	11/23/1997	1,249.00	P976A06542
0640	DATA PROCESSING	139018120	4170002504	SOFTWARE -DATASMART ETH V.35	11/23/1997	1,249.00	P976A06542
0640	DATA PROCESSING	139018120	4170002505	SOFTWARE -DATASMART ETH V.35	11/23/1997	1,249.00	P976A06542
0640	DATA PROCESSING	139018120	4170002507	PC SOFTWARE	4/01/1998	6,850.00	P986A02069
0640	DATA PROCESSING	139018120	4180000307	ZMB MEMORY MODULE	11/19/1991	347.00	P916A06886

ORIGINAL

Dept	Dept Desc	G/L Acct	Asset No	Description	Acq Date	Acq Cost	E/O No
0640	DATA PROCESSING	139018120	4180000968	MULTISTATION ACCESS UNIT	10/21/1994	533.00	P936X00787
0640	DATA PROCESSING	139018120	4180001121	TOKEN EXPRESS	3/30/1995	400.00	P956A01263
0640	DATA PROCESSING	139018120	4180001122	TOKEN EXPRESS	3/30/1995	400.00	P956A01263
0640	DATA PROCESSING	139018120	4180001260	AC31200 1.28 GB HD	5/09/1996	315.00	P966A03845
0640	DATA PROCESSING	139018120	4180001319	UPGRADE -DATASWART 558 1 V35 C	10/01/1997	1,715.00	P976A06541
0640	DATA PROCESSING	139018120	4180001320	UPGRADE -ETHERNET EXPERT TOOL	10/25/1997	7,000.00	P976A06697
0640	DATA PROCESSING	139018120	4180001321	UPGRADE -TOKEN RING EXPERT	10/25/1997	7,000.00	P976A06697
0640	DATA PROCESSING	139018120	4190000954	DATASWART UNIVERSAL RACK SHELF	10/01/1997	1,288.00	P976A06541
0640	DATA PROCESSING	139018120	4250000078	FILE CABINET	11/30/1990	615.00	P906A08290
0640	DATA PROCESSING	139018120	4250000079	FILE CABINET	1/03/1991	615.00	P906A08290
0640	DATA PROCESSING	139018120	4250000080	FILE CABINET	1/03/1991	615.00	P906A08290
0640	DATA PROCESSING	139018120	4250000081	FILE CABINET	1/03/1991	615.00	P906A08290
0640	DATA PROCESSING	139018120	4250000082	FILE CABINET	1/03/1991	615.00	P906A08290
0640	DATA PROCESSING	139018120	4250000083	FILE CABINET	1/03/1991	615.00	P906A08290
0640	DATA PROCESSING	139018120	4250000084	FILE CABINET	1/03/1991	615.00	P906A08290
0640	DATA PROCESSING	139018120	4250000085	FILE CABINET	1/03/1991	615.00	P906A08290
0640	DATA PROCESSING	139018120	4250000086	FILE CABINET	1/03/1991	615.00	P906A08290
0640	DATA PROCESSING	139018120	4250000087	FILE CABINET	1/03/1991	615.00	P906A08290
0640	DATA PROCESSING	139018120	4250000088	FILE CABINET	1/03/1991	615.00	P906A08290
0640	DATA PROCESSING	139018120	4250000089	FILE CABINET	1/03/1991	615.00	P906A08290
0640	DATA PROCESSING	139018120	4250000090	FILE CABINET	1/03/1991	615.00	P906A08290
0640	DATA PROCESSING	139018120	4250000091	FILE CABINET	1/03/1991	615.00	P906A08290
0640	DATA PROCESSING	139018120	4250000092	FILE CABINET	1/03/1991	615.00	P906A08290
0640	DATA PROCESSING	139018120	4250000093	FILE CABINET	1/03/1991	615.00	P906A08290
0640	DATA PROCESSING	139018120	4250000094	FILE CABINET	1/03/1991	615.00	P906A08290
0640	DATA PROCESSING	139018120	4250000095	FILE CABINET	1/03/1991	615.00	P906A08290
0640	DATA PROCESSING	139018120	4250000096	FILE CABINET	1/03/1991	615.00	P906A08290
0640	DATA PROCESSING	139018120	4250000097	FILE CABINET	1/03/1991	615.00	P906A08290
0640	DATA PROCESSING	139018120	4250000098	FILE CABINET	1/03/1991	615.00	P906A08290
0640	DATA PROCESSING	139018120	4250000099	FILE CABINET	1/03/1991	615.00	P906A08290
0640	DATA PROCESSING	139018120	4250000100	FILE CABINET	1/03/1991	615.00	P906A08290
0640	DATA PROCESSING	139018120	4250000101	FILE CABINET	1/03/1991	615.00	P906A08290
0640	DATA PROCESSING	139018120	4250000102	FILE CABINET	1/03/1991	615.00	P906A08290
0640	DATA PROCESSING	139018120	4250000103	FILE CABINET	1/03/1991	615.00	P906A08290
0640	DATA PROCESSING	139018120	4250000104	FILE CABINET	1/03/1991	615.00	P906A08290
0640	DATA PROCESSING	139018120	4250000105	FILE CABINET	1/03/1991	615.00	P906A08290
0640	DATA PROCESSING	139018120	4250000106	FILE CABINET	1/03/1991	615.00	P906A08290
0640	DATA PROCESSING	139018120	4250000107	FILE CABINET	1/03/1991	615.00	P906A08290
0640	DATA PROCESSING	139018120	4250000108	FILE CABINET	1/03/1991	615.00	P906A08290
0640	DATA PROCESSING	139018120	4250000109	FILE CABINET	1/03/1991	615.00	P906A08290
0640	DATA PROCESSING	139018120	4250000110	FILE CABINET	1/03/1991	615.00	P906A08290
0640	DATA PROCESSING	139018120	4250000111	FILE CABINET	1/03/1991	615.00	P906A08290
0640	DATA PROCESSING	139018120	4250000112	FILE CABINET	1/03/1991	615.00	P906A08290
0640	DATA PROCESSING	139018120	4250000113	FILE CABINET	1/30/1991	615.00	P906A08290
0640	DATA PROCESSING	139018120	4250000114	FILE CABINET	1/03/1991	615.00	P906A08290
0640	DATA PROCESSING	139018120	4250000115	FILE CABINET	1/03/1991	615.00	P906A08290
0640	DATA PROCESSING	139018120	4250000116	FILE CABINET	1/03/1991	615.00	P906A08290
0640	DATA PROCESSING	139018120	4250000117	FILE CABINET	1/03/1991	615.00	P906A08290
0640	DATA PROCESSING	139018120	4250000118	FILE CABINET	1/03/1991	615.00	P906A08290
0640	DATA PROCESSING	139018120	4250000119	FILE CABINET	1/03/1991	615.00	P906A08290
0640	DATA PROCESSING	139018120	4250000120	FILE CABINET	1/03/1991	615.00	P906A08290

ORIGINAL

Fixed Assets System  
 Fixed Assets by Department

Dept	Dept Desc	G/L Acct	Asset No	Description	Acq Date	Acq Cost	P/O No
0640	DATA PROCESSING	139018120	4250000121	FILE CABINET	1/03/1991	615.00	P906A08290
0640	DATA PROCESSING	139018120	4250000122	FILE CABINET	1/03/1991	615.00	P906A08290
0640	DATA PROCESSING	139018120	4250000123	FILE CABINET	1/03/1991	615.00	P906A08290
0640	DATA PROCESSING	139018120	4250000124	FILE CABINET	1/03/1991	615.00	P906A08290
0640	DATA PROCESSING	139018120	4250000125	FILE CABINET	1/03/1991	615.00	P906A08290
0640	DATA PROCESSING	139018120	4270000946	UNIVERSAL DATA CABINET	11/21/1997	1,204.00	P976A06646
0640	DATA PROCESSING	139018120	4270000947	UNIVERSAL DATA CABINET	11/21/1997	1,454.00	P976A06666
0640	DATA PROCESSING	139018120	4270000948	UNIVERSAL DATA CABINET	11/21/1997	1,454.00	P976A06666
0640	DATA PROCESSING	139018120	4270000949	UNIVERSAL DATA CABINET	11/21/1997	1,454.00	P976A06666
0640	DATA PROCESSING	139018120	4280000221	IBM PERSONAL TYPEWRITER	9/21/1989	520.00	P896A06829
0640	DATA PROCESSING	139018120	4280000262	IBM WHEELWRITER TYPEWRITER 50-	9/28/1989	1,525.49	P896A07451
0640	DATA PROCESSING	139018120	4340000086	FAX MACHINE	6/19/1991	595.00	P916A04310
0640	DATA PROCESSING	139018120	4420000002	MAILING MACHINE	10/03/1989	1,245.00	P896A07650
0640	DATA PROCESSING	139018120	4450000018	PUNCH AND BINDING MACHINE	12/01/1989	646.50	P896A07654
0640	DATA PROCESSING	139018120	4580000115	PRINTER	6/29/1989	3,771.00	P886A03670
0640	DATA PROCESSING	139018120	4580000116	PRINTER	6/29/1989	3,771.00	P896A03670
0640	DATA PROCESSING	139018120	4580000117	PRINTER	6/29/1989	3,771.00	P896A03670
0640	DATA PROCESSING	139018120	4580000118	PRINTER	6/29/1989	3,771.00	P896A03670
0640	DATA PROCESSING	139018120	4580000119	PRINTER	6/29/1989	3,771.00	P896A03670
0640	DATA PROCESSING	139018120	4580000146	ESPPR PRINTER WITH ACCES	10/13/1989	1,670.00	P896A06308
0640	DATA PROCESSING	139018120	4580000150	PROPRINTER XI24E	10/30/1989	991.00	P896A06483
0640	DATA PROCESSING	139018120	4580000151	PROPRINTER XI24E	10/30/1989	991.00	P896A06483
0640	DATA PROCESSING	139018120	4580000152	PROPRINTER XI24E	10/30/1989	991.00	P896A06483
0640	DATA PROCESSING	139018120	4580000153	PROPRINTER XI24E	10/30/1989	991.00	P896A06483
0640	DATA PROCESSING	139018120	4580000154	PROPRINTER XI24E	10/30/1989	991.00	P896A06483
0640	DATA PROCESSING	139018120	4580000155	PROPRINTER XI24E	10/30/1989	991.00	P896A06483
0640	DATA PROCESSING	139018120	4580000156	PROPRINTER XI24E	10/30/1989	991.00	P896A06483
0640	DATA PROCESSING	139018120	4580000157	PROPRINTER XI24E	10/30/1989	991.00	P896A06483
0640	DATA PROCESSING	139018120	4580000161	PRINTER QUICKWRITER	10/23/1989	1,773.00	P896A06592
0640	DATA PROCESSING	139018120	4580000237	PRINTER	5/14/1990	939.00	P906A04803
0640	DATA PROCESSING	139018120	4580000650	LASER PRINTER	1/31/1992	2,251.00	P916A08566
0640	DATA PROCESSING	139018120	4580000750	PRINTER	4/08/1992	2,771.00	P916A06105
0640	DATA PROCESSING	139018120	4580000751	PRINTER	4/08/1992	2,771.00	P916A06105
0640	DATA PROCESSING	139018120	4580000752	PRINTER	4/08/1992	2,771.00	P916A06105
0640	DATA PROCESSING	139018120	4580001681	PRINTER	5/09/1996	1,035.00	P966A03845
0640	DATA PROCESSING	139018120	4580001682	PRINTER	5/09/1996	1,035.00	P966A03845
0640	DATA PROCESSING	139018120	4580001688	PRINTER	5/09/1996	1,020.00	P966A03845
0640	DATA PROCESSING	139018120	4580001709	COLOR PRINTER	5/31/1996	600.00	P966A03845
0640	DATA PROCESSING	139018120	4580001809	PRINTER TONER LASERJET W/MICRF	8/19/1997	1,007.25	P976A04996
0640	DATA PROCESSING	139018120	4580001810	PRINTER TONER LASERJET W/MICRF	8/19/1997	1,007.25	P976A04996
0640	DATA PROCESSING	139018120	4580001811	PRINTER TONER LASERJET W/MICRF	8/19/1997	1,007.25	P976A04996
0640	DATA PROCESSING	139018120	4580000065	MODEM	6/29/1989	2,210.00	P896A03670
0640	DATA PROCESSING	139018120	4990000066	DISPLAY STATION CARTRIDGE	6/29/1989	457.00	P896A03670
0640	DATA PROCESSING	139018120	4990000067	MODEM	6/29/1989	2,210.00	P896A03670
0640	DATA PROCESSING	139018120	4990000068	MODEM	6/29/1989	2,210.00	P896A03670
0640	DATA PROCESSING	139018120	4990000069	MODEM	6/29/1989	2,210.00	P896A03670
0640	DATA PROCESSING	139018120	4990000125	SHEETFEEDER	11/20/1989	500.00	P896A06308
0640	DATA PROCESSING	139018120	4990000149	MODEM	5/22/1990	1,245.00	P906A04273
0640	DATA PROCESSING	139018120	4990000150	MODEM	5/22/1990	1,245.00	P906A04273
0640	DATA PROCESSING	139018120	4990000151	MODEM	5/22/1990	1,245.00	P906A04273

ORIGINAL

Dept: 0640 Asset type:

Dept	Dept Desc	G/L Acct	Asset No	Description	Acq Date	Acq Cost	P/O No
0640	DATA PROCESSING	139018120	4990000260	TERMINAL MULTIPLEXERS	12/10/1990	481.00	P906A07088
0640	DATA PROCESSING	139018120	4990000261	TERMINAL MULTIPLEXERS	12/10/1990	481.00	P906A07088
0640	DATA PROCESSING	139018120	4990000262	TERMINAL MULTIPLEXERS	12/10/1990	481.00	P906A07088
0640	DATA PROCESSING	139018120	4990000263	TERMINAL MULTIPLEXERS	12/10/1990	481.00	P906A07088
0640	DATA PROCESSING	139018120	4990000320	MODEM	9/24/1991	325.00	P916A08100
0640	DATA PROCESSING	139018120	4990001067	8/16 DEXICE CONTROLLER	10/15/1993	2,967.00	P936A06988
0640	DATA PROCESSING	139018120	4990001879	TOPE COMMANDER RACK NTI-220	10/03/1997	4,164.25	P976A06547
0640	DATA PROCESSING	139018120	4990001903	DATASMART 12 SLOTS CHASIS	10/01/1997	1,375.00	P976A06541
0640	DATA PROCESSING	139018120	5100000221	19' COLOR TELEVISION CABEL REA	9/28/1989	299.00	P896A07452
0640	DATA PROCESSING	139018120	5410000020	DUAL DOOR 451 ACCESS CONTROL S	11/03/1997	4,989.00	P976A06667
0640	DATA PROCESSING	139018120	5600000884	GYP BOARD WALLS	9/16/1997	4,886.00	P976A06467
0640	DATA PROCESSING	139018120	6160000386	AIR CONDITIONER	3/26/1990	4,990.00	P906A03590
0640	DATA PROCESSING	139018120	6160000424	AIR CONDITIONER	7/24/1990	1,852.00	P906A06236
0640	DATA PROCESSING	139018120	6160000463	AIR CONDITIONER	7/04/1990	2,371.00	P906A05674
0640	DATA PROCESSING	139018120	6170000031	AIR CONDITIONER 5 TON	7/20/1989	4,422.50	C890660260
0640	DATA PROCESSING	139018120	6170000032	AIR CONDITIONER 3 TON SPLIT TY	7/20/1989	4,422.50	C890660260
0640	DATA PROCESSING	139018120	6170000120	AIR CONDITIONER SPLIT UNIT	5/24/1991	1,690.00	P916A03837
0640	DATA PROCESSING	139018120	6170000180	SPLIT UNIT AC	10/08/1991	6,950.00	P916A06025
0640	DATA PROCESSING	139018120	6170000185	SPLIT UNIT AC	10/08/1991	6,950.00	P916A06025
0640	DATA PROCESSING	139018120	6170000341	SPLIT UNIT A/C	2/16/1993	2,240.00	P936A00696
0640	DATA PROCESSING	139018120	6170000545	A/C SPLIT TYPE	1/11/1995	725.00	P956A01281
0640	DATA PROCESSING	139018120	6170000546	A/C SPLIT TYPE	1/11/1995	725.00	P956A01271
0640	DATA PROCESSING	139018120	6170000615	A/C SPLIT UNIT	5/31/1996	2,705.00	P966A03868
0640	DATA PROCESSING	139018120	6230000012	10A SCALE AND SCALE STAND	10/03/1989	1,410.00	P896A07650
0640	DATA PROCESSING	139018120	7050000161	COMPRESSOR	11/05/1992	284.00	D93066001
0640	DATA PROCESSING	139018120	7140000118	NETWORK MANAGERS' KIT W/TEST	9/11/1997	528.16	P976A05828
0640	DATA PROCESSING	139018120	7140000119	NETWORK MANAGERS' KIT W/TEST	9/11/1997	528.16	P976A05828
0640	DATA PROCESSING	139018120	7140000120	NETWORK MANAGERS' KIT W/TEST	9/11/1997	528.16	P976A05828
0640	DATA PROCESSING	139018120	7180000089	BATTERY FOR GENERATOR	8/24/1995	415.64	P956A04593
0640	DATA PROCESSING	139018120	7250000002	FABRICATE A 10X15 GALVANIZED C	1/14/1987	600.00	P966A07220
0640	DATA PROCESSING	139018120	7280000086	TRANSFORMER	12/10/1990	11,177.34	P746A08212
		139018120				1,451,822.71	
Division		Count:	334	0640		1,458,094.71	
Department		Count:	334	06		1,458,094.71	
FINAL TOTALS		Count:	334			1,458,094.71	

ORIGINAL